

LPG SERIES-GEL Battery

LPG12-60 (12V60AH)



Specification	
Nominal Voltage	12V
Nominal Capacity(20HR)	60.0AH
Dimension	Length 325±3mm (12.8 inches)
	Width 167±2mm (6.57 inches)
	Container Height 174±2mm (6.85 inches)
	Total Height (with Terminal) 174±2mm (6.85 inches)
Approx Weight	Approx 21.5 kg (47.4lbs)
Terminal	T6
Container Material	ABS
Rated Capacity	60.0 AH/3.00A (20hr, 1.80V/cell, 25°C/77°F)
	55.8 AH/5.58A (10hr, 1.75V/cell, 25°C/77°F)
	48.0 AH/9.60A (5hr, 1.75V/cell, 25°C/77°F)
	41.7 AH/13.9A (3hr, 1.75V/cell, 25°C/77°F)
	33.0 AH/33.0A (1hr, 1.67V/cell, 25°C/77°F)
Max. Discharge Current	600A (5s)
Internal Resistance	Approx 8.8mΩ
Operating Temp. Range	Discharge : -20~55°C (-4~131°F)
	Charge : 0~40°C (32~104°F)
	Storage : -20~50°C (-4~122°F)
Nominal Operating Temp. Range	25±3°C (77±5°F)
Cycle Use	Initial Charging Current less than 15A. Voltage 14.4V~15.0V at 25°C(77°F)Temp. Coefficient -30mV/°C
	No limit on Initial Charging Current Voltage 13.5V~13.8V at 25°C(77°F)Temp. Coefficient -20mV/°C
Capacity affected by Temperature	40°C (104°F) 103%
	25°C (77°F) 100%
	0°C (32°F) 86%
Self Discharge	Leoch LPG series batteries may be stored for up to 9 months at 25°C(77°F) and then a freshening charge is required. For higher temperatures the time interval will be shorter.

Applications

- ◆ Telecommunications
- ◆ Solar system
- ◆ Wind power system
- ◆ Wheelchair
- ◆ Floor cleaning machines
- ◆ Golf trolley
- ◆ Boats



Constant Current Discharge (Amperes) at 25 °C (77°F)

F.V/Time	20min	30min	45min	1h	2h	3h	4h	5h	6h	7h	8h	9h	10h	20h
1.85V/cell	50.8	39.8	30.4	25.4	16.1	12.3	10.2	8.80	7.59	6.72	6.06	5.54	5.24	2.88
1.80V/cell	58.1	44.5	33.5	28.1	17.5	13.2	10.8	9.24	7.97	7.04	6.35	5.83	5.47	3.00
1.75V/cell	65.3	49.0	36.2	30.1	18.5	13.9	11.3	9.60	8.25	7.29	6.56	6.00	5.58	3.06
1.70V/cell	70.4	52.4	38.5	31.8	19.6	14.5	11.7	9.90	8.54	7.53	6.75	6.16	5.71	3.10
1.67V/cell	73.3	54.5	39.8	33.0	20.1	15.0	12.0	10.1	8.68	7.64	6.86	6.24	5.78	3.13
1.60V/cell	79.4	58.3	42.8	35.0	20.9	15.6	12.4	10.4	8.89	7.80	6.98	6.37	5.89	3.17

Constant Power Discharge (Watts/cell) at 25 °C (77°F)

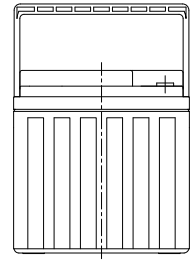
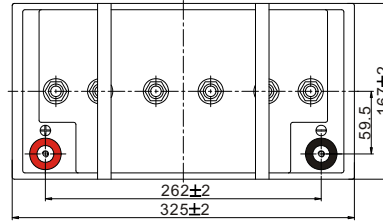
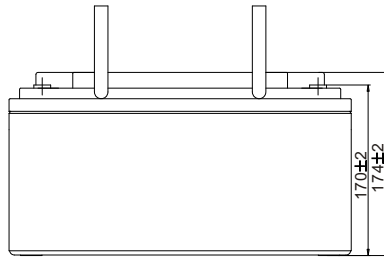
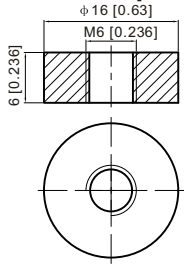
F.V/Time	20min	30min	45min	1h	2h	3h	4h	5h	6h	7h	8h	9h	10h	20h
1.85V/cell	97.2	76.8	58.9	49.5	31.5	24.1	20.0	17.4	15.0	13.3	12.1	11.0	10.4	5.75
1.80V/cell	109.8	85.0	64.5	54.4	34.0	25.7	21.2	18.2	15.7	13.9	12.6	11.6	10.9	5.98
1.75V/cell	122.1	92.6	69.3	57.9	35.9	27.1	22.1	18.8	16.2	14.4	13.0	11.9	11.1	6.09
1.70V/cell	130.1	98.3	73.0	60.9	37.9	28.2	22.8	19.4	16.8	14.8	13.3	12.2	11.3	6.16
1.67V/cell	133.8	101.1	75.1	62.9	38.6	28.9	23.2	19.7	17.0	15.0	13.5	12.3	11.5	6.22
1.60V/cell	143.4	107.2	80.0	66.4	40.0	30.0	24.0	20.3	17.4	15.3	13.7	12.6	11.7	6.30



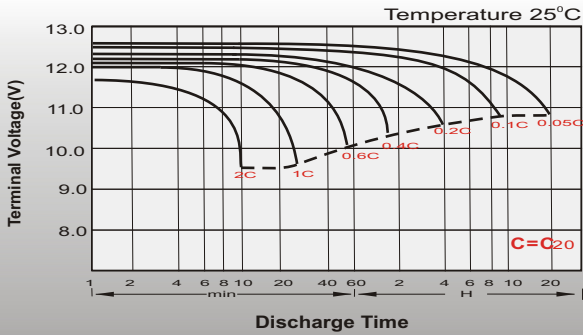
Dimensions

T6 Terminal

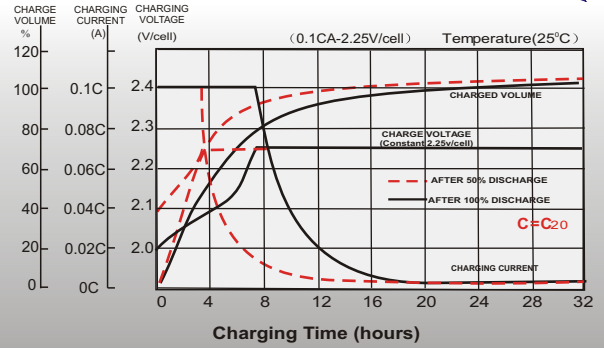
Unit: mm [inches]



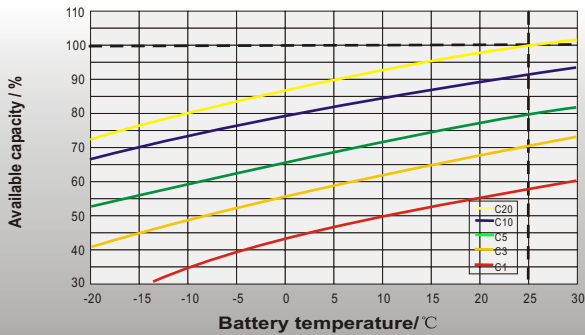
Discharge Characteristics



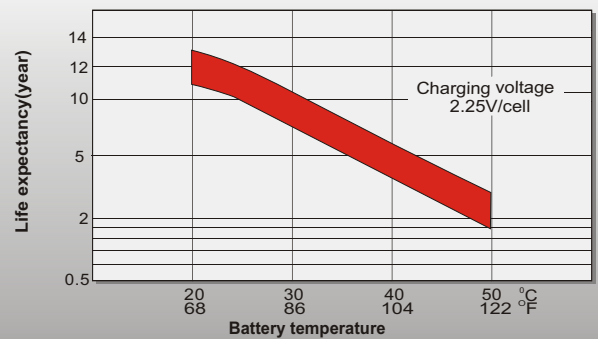
Float Charging Characteristics



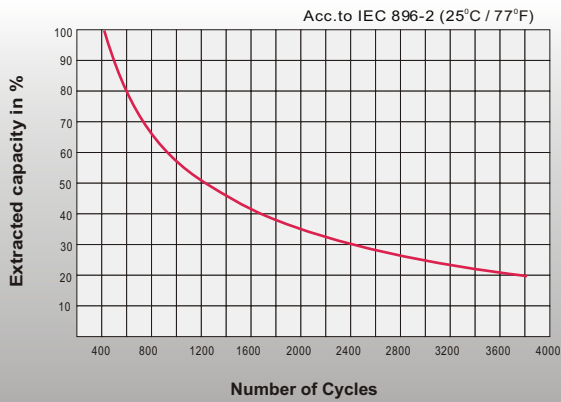
Temperature Effects in Relation to Battery Capacity



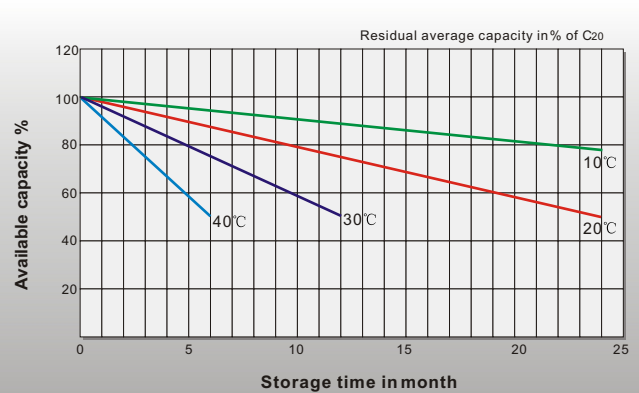
Effect of Temperature on Long Term Float Life



Cycle Life in Relation to Depth of Discharge



General Relation of Capacity VS. Storage Time



Официальный дилер в РФ
www.UPS-LAB.ru
 +7 (495) 109-90-77