

LPG SERIES-GEL Battery

LPG12-45 (12V45AH)



Specification	
Nominal Voltage	12V
Nominal Capacity(20HR)	45.0AH
Dimension	Length 257±3mm (10.12 inches)
	Width 132±2mm (5.20 inches)
	Container Height 200±2mm (7.87 inches)
	Total Height (with Terminal) 200±2mm (7.87 inches)
	Approx Weight
Terminal	T6
Container Material	ABS
Rated Capacity	45.0 AH/2.25A (20hr, 1.80V/cell, 25°C/77°F)
	40.0 AH/4.0A (10hr, 1.75V/cell, 25°C/77°F)
	36.0 AH/7.2A (5hr, 1.75V/cell, 25°C/77°F)
	31.2 AH/10.4A (3hr, 1.75V/cell, 25°C/77°F)
	24.8 AH/24.8A (1hr, 1.67V/cell, 25°C/77°F)
Max. Discharge Current	450A (5s)
Internal Resistance	Approx 9.6mΩ
Operating Temp. Range	Discharge : -20~55°C (-4~131°F)
	Charge : 0~40°C (32~104°F)
	Storage : -20~50°C (-4~122°F)
Nominal Operating Temp. Range	25±3°C (77±5°F)
Cycle Use	Initial Charging Current less than 11.25A. Voltage 14.4V~15.0V at 25°C(77°F)Temp. Coefficient -30mV/°C
	Standby Use
Capacity affected by Temperature	40°C (104°F) 103%
	25°C (77°F) 100%
	0°C (32°F) 86%
Self Discharge	Leoch LPG series batteries may be stored for up to 9 months at 25°C(77°F) and then a freshening charge is required. For higher temperatures the time interval will be shorter.

Applications

- ◆ Telecommunications
- ◆ Solar system
- ◆ Wind power system
- ◆ Wheelchair
- ◆ Floor cleaning machines
- ◆ Golf trolley
- ◆ Boats



Constant Current Discharge (Amperes) at 25 °C (77°F)

F.V/Time	20min	30min	45min	1h	2h	3h	4h	5h	6h	7h	8h	9h	10h	20h
1.85V/cell	38.1	29.9	22.8	19.1	12.1	9.23	7.64	6.60	5.69	5.04	4.55	4.16	3.75	2.16
1.80V/cell	43.6	33.4	25.1	21.1	13.1	9.89	8.10	6.93	5.98	5.28	4.76	4.37	3.92	2.25
1.75V/cell	49.0	36.7	27.2	22.5	13.9	10.4	8.48	7.20	6.19	5.46	4.92	4.50	4.00	2.30
1.70V/cell	52.8	39.3	28.9	23.9	14.7	10.9	8.76	7.43	6.41	5.64	5.06	4.62	4.09	2.32
1.67V/cell	54.9	40.9	29.9	24.8	15.1	11.2	8.98	7.58	6.51	5.73	5.14	4.68	4.14	2.35
1.60V/cell	59.5	43.7	32.1	26.3	15.7	11.7	9.32	7.81	6.67	5.85	5.23	4.78	4.22	2.38

Constant Power Discharge (Watts/cell) at 25 °C (77°F)

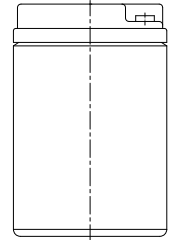
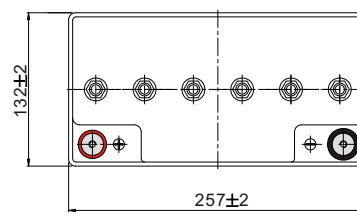
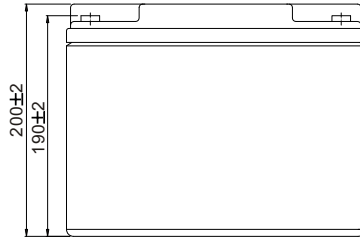
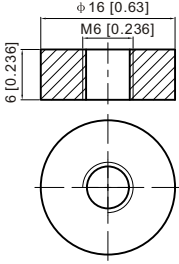
F.V/Time	20min	30min	45min	1h	2h	3h	4h	5h	6h	7h	8h	9h	10h	20h
1.85V/cell	72.9	57.6	44.2	37.1	23.7	18.1	15.0	13.0	11.3	10.0	9.04	8.28	7.49	4.31
1.80V/cell	82.4	63.7	48.4	40.8	25.5	19.3	15.9	13.6	11.8	10.4	9.45	8.68	7.80	4.48
1.75V/cell	91.5	69.5	51.9	43.4	26.9	20.3	16.6	14.1	12.2	10.8	9.73	8.93	7.95	4.57
1.70V/cell	97.5	73.7	54.7	45.7	28.4	21.1	17.1	14.5	12.6	11.1	10.0	9.16	8.13	4.62
1.67V/cell	100.4	75.8	56.3	47.1	29.0	21.7	17.4	14.8	12.7	11.3	10.1	9.26	8.21	4.66
1.60V/cell	107.6	80.4	60.0	49.8	30.0	22.5	18.0	15.2	13.0	11.5	10.3	9.44	8.36	4.72



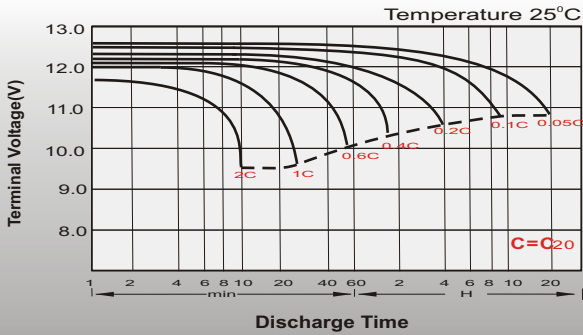
Dimensions

T6 Terminal

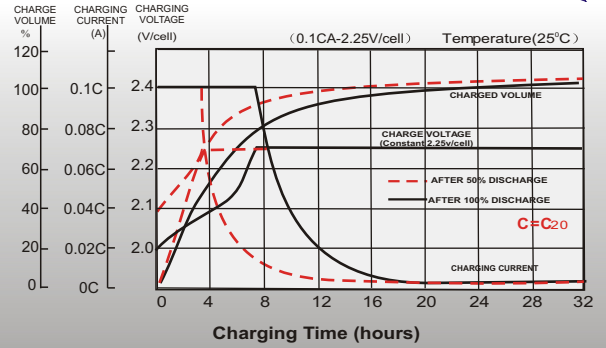
Unit: mm [inches]



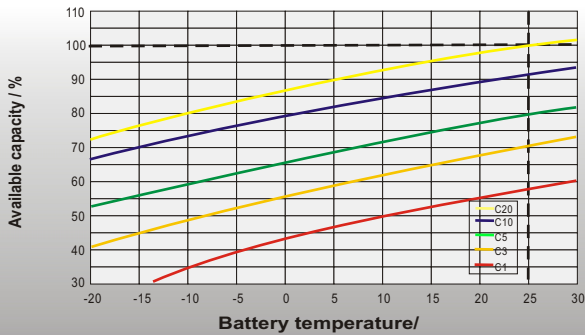
Discharge Characteristics



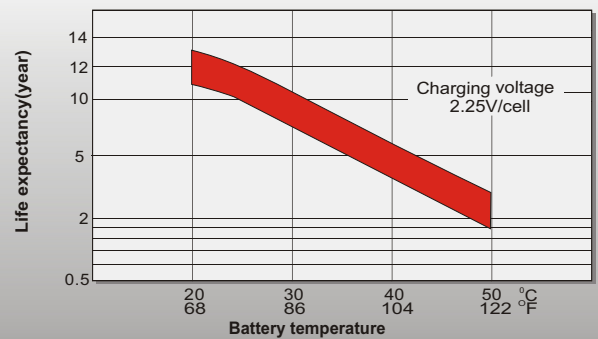
Float Charging Characteristics



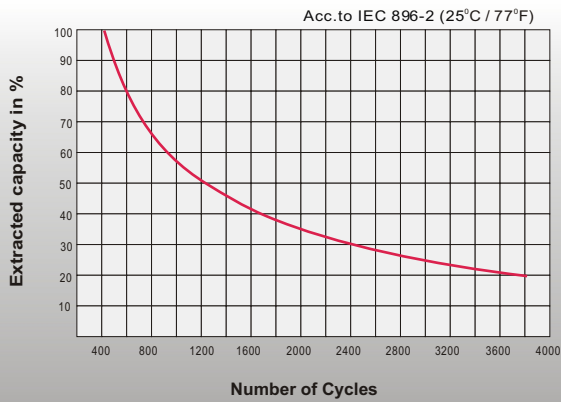
Temperature Effects in Relation to Battery Capacity



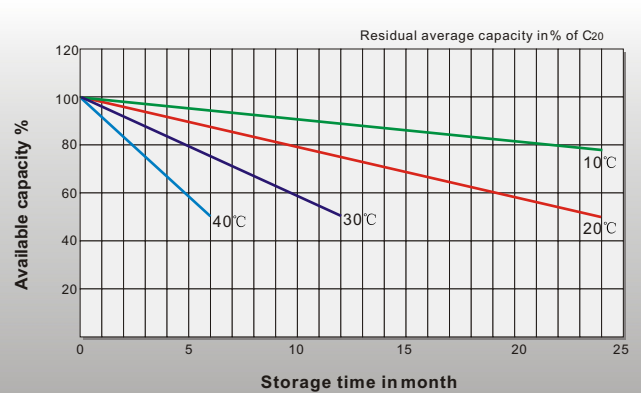
Effect of Temperature on Long Term Float Life



Cycle Life in Relation to Depth of Discharge



General Relation of Capacity VS. Storage Time



Официальный дилер в РФ
www.UPS-LAB.ru
 +7 (495) 109-90-77