

ESC 81

LED EXIT LIGHT WITH A LIGHT PLATE, 40 M AND 60 M VIEWING DISTANCES, CEILING AND WALL MOUNTING AS STANDARD



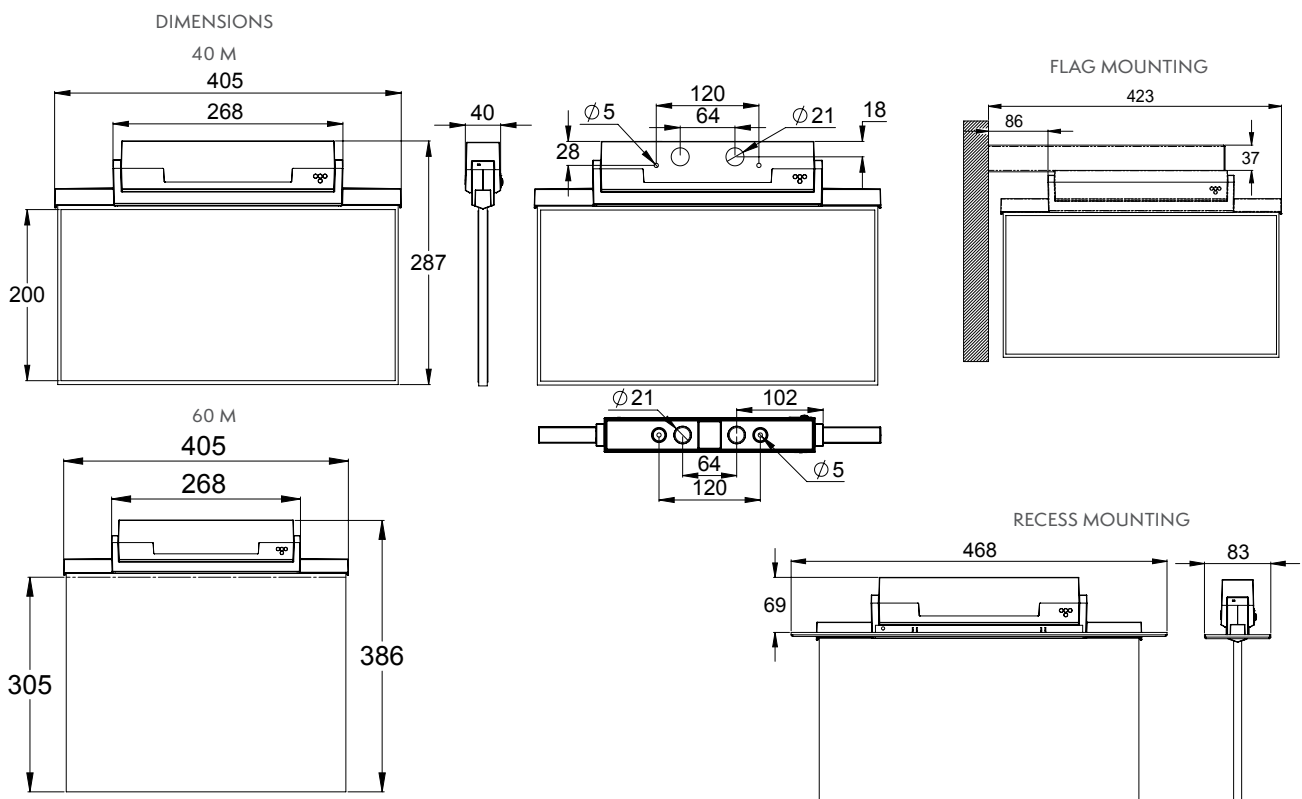
Installation video



ESC 81 is an innovative LED exit light equipped with a light plate. It combines cutting edge technology with modern luminaire design.

Evenly illuminated light plates, low power consumption and slender looking luminaires are the result of Teknoware's pioneering, expertise in electronics and product design. Luminaire can be used as 1 or 2 sided, recess and surface mounted.

ESC 81 is particularly easy and fast to install thanks to a separate mounting piece, into which also the power supply is connected.



Aperture for recess mounting of centrally supplied luminaires: 45 mm x 415 mm (TWT8101)
Aperture for recess mounting of self-contained luminaires: 53 mm x 415 mm (TWT8101B)

- ⊕ = Protection class of luminaire is 1
- ⊕ = Protection class of luminaire is 2
- ⊕ = Protection class of luminaire is 3
- ⊕ = Luminaire is suitable for through-wiring
- IP20 = Protection rating
- col = Colour of the body
- View = Viewing distance
- LED = LED as a light source
- Aalto = Aalto Control compatible (incl. Lumi Test)
- M = Self-contained luminaire with Lumi test self-testing
- Escap = Self-contained luminaire with 1 h super capacitor backup
- C = Compatible with Tapsa Control Central Battery Unit and Local Controller
- 850 = compliant with the 850 glow wire test
- IC = Compatible with Intelligent Controller
- CBS = Centrally supplied

CENTRALLY SUPPLIED LUMINAIRES

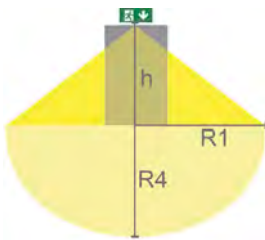
24 V CENTRALLY SUPPLIED EXIT LIGHTS

Product code	Nominal supply voltage	Max input power	Operation mode	Temperature range	Electrical installation	Weight (kg)
TWT8141W	24 V 50/60 Hz AC,DC	3,2 VA / 3,8 W	CBS	-30... +50°C	2/3 x 2,5 mm ² -o-	1,4
Y8141W153	(individually packed incl. TWT8141W + pictogram, 40 m, 2-sided)					
Y8141W158	(individually packed incl. TWT8141W + pictogram, 40 m, 1-sided)					
Y8141W157	(individually packed incl. TWT8141W + pictogram, 40 m, 1-sided)					
Y8141W155	(individually packed incl. TWT8141W + pictogram, 40 m, 2-sided)					
Y8141W159	(individually packed incl. TWT8141W + pictogram, 40 m, 1-sided)					
Y8141W151	(individually packed incl. TWT8141W + pictogram, 40 m, 2-sided)					
Y8141W152	(individually packed incl. TWT8141W + pictogram, 40 m, 1-sided)					
Y8141W163	(individually packed incl. TWT8141W + pictogram, 60 m, 2-sided)					
Y8141W168	(individually packed incl. TWT8141W + pictogram, 60 m, 1-sided)					
Y8141W167	(individually packed incl. TWT8141W + pictogram, 60 m, 1-sided)					
Y8141W165	(individually packed incl. TWT8141W + pictogram, 60 m, 2-sided)					
Y8141W169	(individually packed incl. TWT8141W + pictogram, 60 m, 1-sided)					
Y8141W161	(individually packed incl. TWT8141W + pictogram, 60 m, 2-sided)					
Y8141W162	(individually packed incl. TWT8141W + pictogram, 60 m, 1-sided)					

LIGHT DISTRIBUTION TABLES

Downlight chart for Exit Lights

Tables of 1 lux and 0,5 lux, under the Exit Light.
Level of measurement 0,02 m, measurement result with battery operation.



| R1 distance from wall (X axis) | R4 distance from wall (Y axis)

TWT8141W

Mounting height (m)	Below the light (lux)	R1 (m)	R4 (m)	R1 (m)	R4 (m)
		1 lux	1 lux	0,5 lux	0,5 lux
2	1,5	0,5	1	1,5	2
2,5	0,8	-	-	1,5	2

ESC 81

CENTRALLY SUPPLIED LUMINAIRES



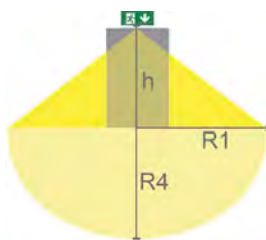
230 V CENTRALLY SUPPLIED EXIT LIGHTS

Product code	Nominal supply voltage	Max input power	Operation mode	Temperature range	Electrical installation	Weight (kg)
TWT8151W	220-240 V, 50/60 Hz AC,DC	5,5 VA / 3,2 W	CBS	-30... +50°C	2/3 x 2,5 mm ² -0-	1,4
Y8151W153	(individually packed incl. TWT8151W + pictogram, 40 m, 2-sided)					
Y8151W158	(individually packed incl. TWT8151W + pictogram, 40 m, 1-sided)					
Y8151W157	(individually packed incl. TWT8151W + pictogram, 40 m, 1-sided)					
Y8151W155	(individually packed incl. TWT8151W + pictogram, 40 m, 2-sided)					
Y8151W159	(individually packed incl. TWT8151W + pictogram, 40 m, 1-sided)					
Y8151W151	(individually packed incl. TWT8151W + pictogram, 40 m, 2-sided)					
Y8151W152	(individually packed incl. TWT8151W + pictogram, 40 m, 1-sided)					
Y8151W163	(individually packed incl. TWT8151W + pictogram, 60 m, 2-sided)					
Y8151W168	(individually packed incl. TWT8151W + pictogram, 60 m, 1-sided)					
Y8151W167	(individually packed incl. TWT8151W + pictogram, 60 m, 1-sided)					
Y8151W165	(individually packed incl. TWT8151W + pictogram, 60 m, 2-sided)					
Y8151W169	(individually packed incl. TWT8151W + pictogram, 60 m, 1-sided)					
Y8151W161	(individually packed incl. TWT8151W + pictogram, 60 m, 2-sided)					
Y8151W162	(individually packed incl. TWT8151W + pictogram, 60 m, 1-sided)					

LIGHT DISTRIBUTION TABLES

Downlight chart for Exit Lights

Tables of 1 lux and 0,5 lux, under the Exit Light.
Level of measurement 0,02 m, measurement result with battery operation.



R1 distance from wall (X axis) | R4 distance from wall (Y axis)

TWT8151W

Mounting height (m)	Below the light (lux)	R1 (m)	R4 (m)	R1 (m)	R4 (m)
		1 lux	1 lux	0,5 lux	0,5 lux
2	1,5	0,5	1	1,5	2
2,5	0,8	-	-	1,5	2

- ⊕ = Protection class of luminaire is 1
- ⊕ = Protection class of luminaire is 2
- ⊕ = Protection class of luminaire is 3
- ⊕ = Luminaire is suitable for through-wiring
- IP20 = Protection rating
- Col = Colour of the body
- View = Viewing distance
- LED = LED as a light source
- Aalto = Aalto Control compatible (incl. Lumi Test)
- M = Self-contained luminaire with Lumi test self-testing
- Escap = Self-contained luminaire with 1 h super capacitor backup
- C = Compatible with Tapsa Control Central Battery Unit and Local Controller
- 850 = compliant with the 850 glow wire test
- IC = Compatible with Intelligent Controller
- CBS = Centrally supplied

CENTRALLY SUPPLIED LUMINAIRES



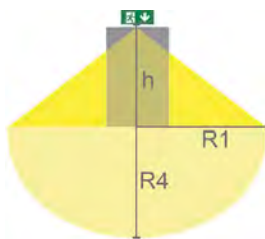
ADDRESSABLE 230 V CENTRALLY SUPPLIED EXIT LIGHTS

Product code	Nominal supply voltage	Max input power	Operation mode	Temperature range	Electrical installation	Weight (kg)
TWT8151WK	220-240 V, 50/60 Hz AC,DC	6,5 VA / 4,2 W	CBS / C	-30...+50°C	2/3 x 2,5 mm ² -o-	1,4
Y8151WK153	(individually packed incl. TWT8151WK + pictogram, 40 m, 2-sided)					
Y8151WK158	(individually packed incl. TWT8151WK + pictogram, 40 m, 1-sided)					
Y8151WK157	(individually packed incl. TWT8151WK + pictogram, 40 m, 1-sided)					
Y8151WK155	(individually packed incl. TWT8151WK + pictogram, 40 m, 2-sided)					
Y8151WK159	(individually packed incl. TWT8151WK + pictogram, 40 m, 1-sided)					
Y8151WK151	(individually packed incl. TWT8151WK + pictogram, 40 m, 2-sided)					
Y8151WK152	(individually packed incl. TWT8151WK + pictogram, 40 m, 1-sided)					
Y8151WK163	(individually packed incl. TWT8151WK + pictogram, 60 m, 2-sided)					
Y8151WK168	(individually packed incl. TWT8151WK + pictogram, 60 m, 1-sided)					
Y8151WK167	(individually packed incl. TWT8151WK + pictogram, 60 m, 1-sided)					
Y8151WK165	(individually packed incl. TWT8151WK + pictogram, 60 m, 2-sided)					
Y8151WK169	(individually packed incl. TWT8151WK + pictogram, 60 m, 1-sided)					
Y8151WK161	(individually packed incl. TWT8151WK + pictogram, 60 m, 2-sided)					
Y8151WK162	(individually packed incl. TWT8151WK + pictogram, 60 m, 1-sided)					

LIGHT DISTRIBUTION TABLES

Downlight chart for Exit Lights

Tables of 1 lux and 0,5 lux, under the Exit Light.
Level of measurement 0,02 m, measurement result with battery operation.



R1 distance from wall (X axis) | R4 distance from wall (Y axis)

TWT8151WK

Mounting height (m)	Below the light (lux)	R1 (m)	R4 (m)	R1 (m)	R4 (m)
		1 lux	1 lux	0,5 lux	0,5 lux
2	1,5	0,5	1	1,5	2
2,5	0,8	-	-	1,5	2

ESC 81

SELF-CONTAINED LUMINAIRES WITH SUPER CAPACITOR



SELF-CONTAINED EXIT LIGHTS WITH SUPER CAPACITOR AND WIRELESS CENTRAL MONITORING



Product code	Nominal supply voltage	Max input power	Operation mode	Temperature range	Electrical installation	Weight (kg)
TWS8192WA	220-240 V, 50/60 Hz AC	4 VA	1 h Escap + Aalto	-25... +35°C	2/3 x 2,5 mm ² -o-	1,4
Y8192WA153	(individually packed incl. TWS8192WA + pictogram, 40 m, 2-sided)					
Y8192WA158	(individually packed incl. TWS8192WA + pictogram, 40 m, 1-sided)					
Y8192WA157	(individually packed incl. TWS8192WA + pictogram, 40 m, 1-sided)					
Y8192WA155	(individually packed incl. TWS8192WA + pictogram, 40 m, 2-sided)					
Y8192WA159	(individually packed incl. TWS8192WA + pictogram, 40 m, 1-sided)					
Y8192WA151	(individually packed incl. TWS8192WA + pictogram, 40 m, 2-sided)					
Y8192WA152	(individually packed incl. TWS8192WA + pictogram, 40 m, 1-sided)					
Y8192WA163	(individually packed incl. TWS8192WA + pictogram, 60 m, 2-sided)					
Y8192WA168	(individually packed incl. TWS8192WA + pictogram, 60 m, 1-sided)					
Y8192WA167	(individually packed incl. TWS8192WA + pictogram, 60 m, 1-sided)					
Y8192WA165	(individually packed incl. TWS8192WA + pictogram, 60 m, 2-sided)					
Y8192WA169	(individually packed incl. TWS8192WA + pictogram, 60 m, 1-sided)					
Y8192WA161	(individually packed incl. TWS8192WA + pictogram, 60 m, 2-sided)					
Y8192WA162	(individually packed incl. TWS8192WA + pictogram, 60 m, 1-sided)					

SELF-CONTAINED EXIT LIGHTS WITH SUPER CAPACITOR AND SELF-TESTING



Product code	Nominal supply voltage	Max input power	Operation mode	Temperature range	Electrical installation	Weight (kg)
TWS8192WM	220-240 V, 50/60 Hz AC	4 VA	1 h Escap + M	-25... +35°C	2/3 x 2,5 mm ² -o-	1,4
Y8192WM153	(individually packed incl. TWS8192WM + pictogram, 40 m, 2-sided)					
Y8192WM158	(individually packed incl. TWS8192WM + pictogram, 40 m, 1-sided)					
Y8192WM157	(individually packed incl. TWS8192WM + pictogram, 40 m, 1-sided)					
Y8192WM155	(individually packed incl. TWS8192WM + pictogram, 40 m, 2-sided)					
Y8192WM159	(individually packed incl. TWS8192WM + pictogram, 40 m, 1-sided)					
Y8192WM151	(individually packed incl. TWS8192WM + pictogram, 40 m, 2-sided)					
Y8192WM152	(individually packed incl. TWS8192WM + pictogram, 40 m, 1-sided)					
Y8192WM163	(individually packed incl. TWS8192WM + pictogram, 60 m, 2-sided)					
Y8192WM168	(individually packed incl. TWS8192WM + pictogram, 60 m, 1-sided)					
Y8192WM167	(individually packed incl. TWS8192WM + pictogram, 60 m, 1-sided)					
Y8192WM165	(individually packed incl. TWS8192WM + pictogram, 60 m, 2-sided)					
Y8192WM169	(individually packed incl. TWS8192WM + pictogram, 60 m, 1-sided)					
Y8192WM161	(individually packed incl. TWS8192WM + pictogram, 60 m, 2-sided)					
Y8192WM162	(individually packed incl. TWS8192WM + pictogram, 60 m, 1-sided)					

- = Protection class of luminaire is 1
- = Protection class of luminaire is 2
- = Protection class of luminaire is 3
- = Luminaire is suitable for through-wiring
- = Protection rating
- = Colour of the body
- = Viewing distance
- = LED as a light source
- Aalto** = Aalto Control compatible (incl. Lumi Test)
- M** = Self-contained luminaire with Lumi test self-testing
- Escap** = Self-contained luminaire with 1 h super capacitor backup
- C** = Compatible with Tapsa Control Central Battery Unit and Local Controller
- = compliant with the 850 glow wire test
- IC** = Compatible with Intelligent Controller
- CBS** = Centrally supplied

SELF-CONTAINED LUMINAIRES WITH BATTERY

SELF-CONTAINED EXIT LIGHTS WITH 3 H BATTERY AND WIRELESS CENTRAL MONITORING



Product code	Nominal supply voltage	Max input power	Operation mode	Temperature range	Electrical installation	Weight (kg)
TWT8153WA	220-240 V, 50/60 Hz AC	4,5 VA	3 h battery + Aalto	-5...+30C	2/3 x 2,5 mm ² -o-	1,4
Y8153WA153	(individually packed incl. TWT8153WA+ pictogram, 40 m, 2-sided)					
Y8153WA158	(individually packed incl. TWT8153WA+ pictogram, 40 m, 1-sided)					
Y8153WA157	(individually packed incl. TWT8153WA+ pictogram, 40 m, 1-sided)					
Y8153WA155	(individually packed incl. TWT8153WA+ pictogram, 40 m, 2-sided)					
Y8153WA159	(individually packed incl. TWT8153WA+ pictogram, 40 m, 1-sided)					
Y8153WA151	(individually packed incl. TWT8153WA+ pictogram, 40 m, 2-sided)					
Y8153WA152	(individually packed incl. TWT8153WA+ pictogram, 40 m, 1-sided)					
Y8153WA163	(individually packed incl. TWT8153WA+ pictogram, 60 m, 2-sided)					
Y8153WA168	(individually packed incl. TWT8153WA+ pictogram, 60 m, 1-sided)					
Y8153WA167	(individually packed incl. TWT8153WA+ pictogram, 60 m, 1-sided)					
Y8153WA165	(individually packed incl. TWT8153WA+ pictogram, 60 m, 2-sided)					
Y8153WA169	(individually packed incl. TWT8153WA+ pictogram, 60 m, 1-sided)					
Y8153WA161	(individually packed incl. TWT8153WA+ pictogram, 60 m, 2-sided)					
Y8153WA162	(individually packed incl. TWT8153WA+ pictogram, 60 m, 1-sided)					

EXIT LIGHTS

SELF-CONTAINED EXIT LIGHTS WITH 3 H BATTERY AND SELF-TESTING



Product code	Nominal supply voltage	Max input power	Operation mode	Temperature range	Electrical installation	Weight (kg)
TWT8153WM	220-240 V, 50/60 Hz AC	4,5 VA	3 h battery + M	-5...+30°C	2/3 x 2,5 mm ² -o-	1,4
Y8153WM153	(individually packed incl. TWT8153WM+ pictogram, 40 m, 2-sided)					
Y8153WM158	(individually packed incl. TWT8153WM+ pictogram, 40 m, 1-sided)					
Y8153WM157	(individually packed incl. TWT8153WM+ pictogram, 40 m, 1-sided)					
Y8153WM155	(individually packed incl. TWT8153WM+ pictogram, 40 m, 2-sided)					
Y8153WM159	(individually packed incl. TWT8153WM+ pictogram, 40 m, 1-sided)					
Y8153WM151	(individually packed incl. TWT8153WM+ pictogram, 40 m, 2-sided)					
Y8153WM152	(individually packed incl. TWT8153WM+ pictogram, 40 m, 1-sided)					
Y8153WM163	(individually packed incl. TWT8153WM+ pictogram, 60 m, 2-sided)					
Y8153WM168	(individually packed incl. TWT8153WM+ pictogram, 60 m, 1-sided)					
Y8153WM167	(individually packed incl. TWT8153WM+ pictogram, 60 m, 1-sided)					
Y8153WM165	(individually packed incl. TWT8153WM+ pictogram, 60 m, 2-sided)					
Y8153WM169	(individually packed incl. TWT8153WM+ pictogram, 60 m, 1-sided)					
Y8153WM161	(individually packed incl. TWT8153WM+ pictogram, 60 m, 2-sided)					
Y8153WM162	(individually packed incl. TWT8153WM+ pictogram, 60 m, 1-sided)					



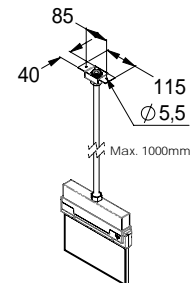
SEPARATELY ORDERED PICTOGRAMS

Product code	Pictogram	Product description	Viewing distance
PBV81402E		Down arrow 2-sided	40 m
PBV81402E3		Down arrow, 1-sided	40 m
PBV81401E		Left/right arrow, 2-sided	40 m
PBV81401E1		Right arrow, 1-sided	40 m
PBV81401E2		Left arrow, 1-sided	40 m
PBV81405E		Up arrow 2-sided	40 m
PBV81405E3		Up arrow, 1-sided	40 m
PBV81602E		Down arrow 2-sided	60 m
PBV81602E3		Down arrow, 1-sided	60 m
PBV81601E		Left/right arrow, 2-sided	60 m
PBV81601E1		Right arrow, 1-sided	60 m
PBV81601E2		Left arrow, 1-sided	60 m
PBV81605E		Up arrow 2-sided	60 m
PBV81605E3		Up arrow, 1-sided	60 m

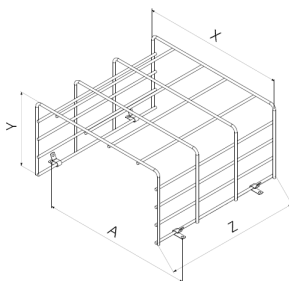
ACCESSORIES

Product code	Product description
TWT8101	Recess mounting frame for centrally supplied luminaires
TWT8101B	Recess mounting frame for self-contained luminaires
TWT8102	Flag bracket
TWT9000	Suspension bracket
TW77510B	Shock protecting cover (dims: X=420, Y=165, Z=505, A=440)

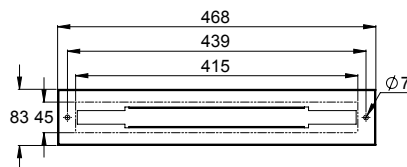
SUSPENSION BRACKET
TWT9000



SHOCK PROTECTING COVER
TW77510B

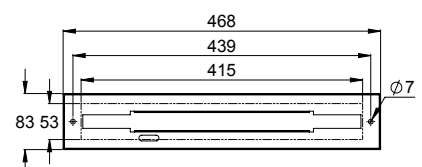


RECESS MOUNTING FRAME
TWT8101

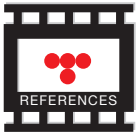


Aperture for recess mounting of centrally supplied luminaires: 45 mm x 415 mm (TWT8101)

RECESS MOUNTING FRAME
TWT8101B



Aperture for recess mounting of self-contained luminaires: 53 mm x 415 mm (TWT8101B)



CASE XXL Department Store, Lahti, Finland

XXL Sports & Outdoor is a department store selling for example, sports, outdoor and wilderness products. Originally from Norway, the Group opened its first department store in Finland in 2014, and in Lahti October 2016.

In Lahti XXL there are ESC 81 exit lights (p. 80) and Zonespot II Midbay emergency lights (p. 184). The central battery system is 230 V, TKT65B (p. 24).